



UNIFORMS/EQUIPMENT/APPAREL

2020-21

HAIR CONTROL



- **Device that goes around hair only.**
- **No color restrictions.**
- **Must be of soft material.**
- **No “extensions” on hair control devices.**
- **Beads are prohibited.**

ARE THESE HAIR CONTROL DEVICES **LEGAL**?



YES

LEGAL hair control



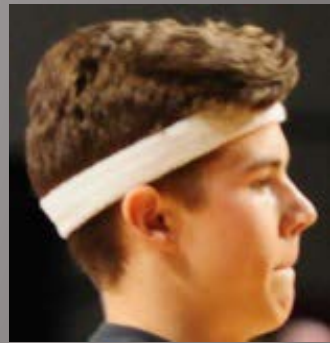
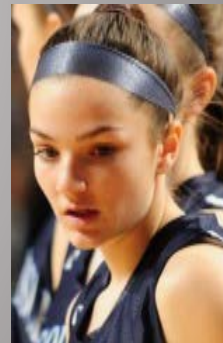
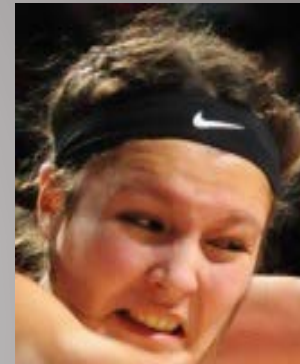
NO

ILLEGAL hair control
(has extensions)

HEADBANDS, WRISTBANDS, ARM/LEG SLEEVES, COMPRESSION SHORTS AND SLEEVES



- Must be a single solid color: white, black, beige, or the predominant color of the jersey.



- All such articles for all teammates must be the same color.

ARE THESE **LEGAL** HEADBANDS?



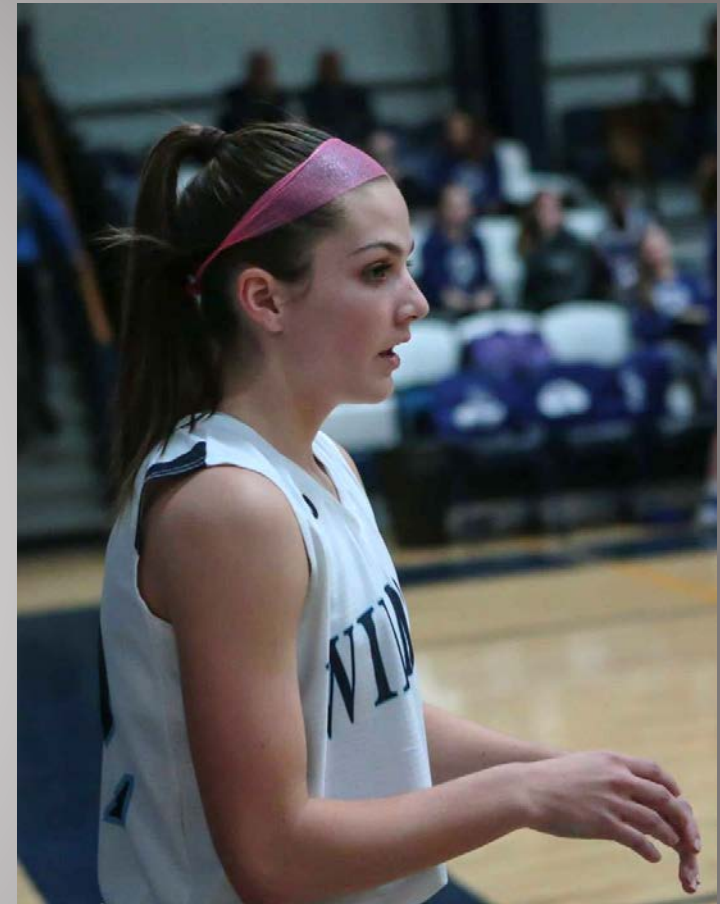
NO

ILLEGAL headband
(has extensions)



NO

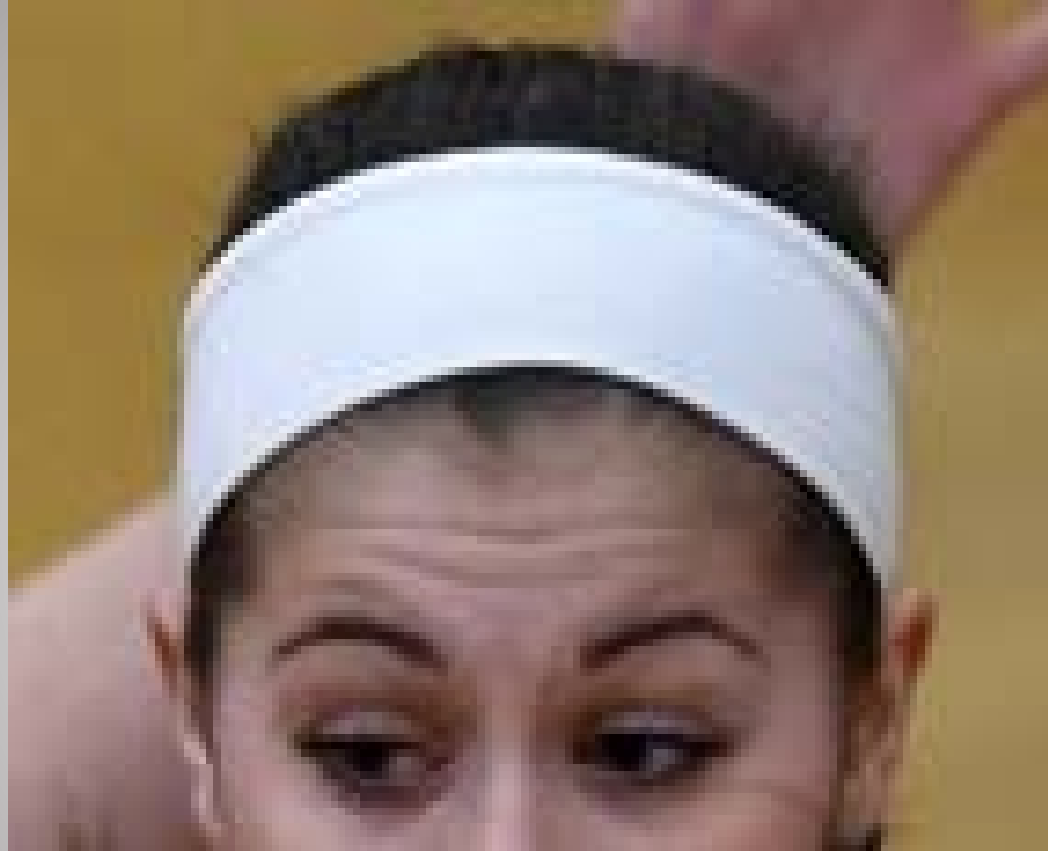
ILLEGAL headband
(too many logos)



NO

ILLEGAL headband
(illegal color)

IS THIS A **LEGAL** HEADBAND?



YES

LEGAL headband
May be up to 3" wide

UNDERSHIRTS



- **Must be a single solid color similar to the torso of the jersey.**
- **Sleeves' edges may not be frayed and must be the same length per player.**
- **One teammate may have short sleeves, another may have long sleeves.**

ARE THESE **LEGAL** UNDERSHIRTS?



YES

LEGAL undershirt



NO

ILLEGAL undershirt
(color must match primary color of jersey)

WRISTBANDS



- **Must be made of absorbent material.**
- **Must be worn below the elbow.**
- **Only one wristband permitted per arm.**

ARE THESE WRISTBANDS WORN **LEGALLY**?



YES

LEGALLY worn wristband



NO

ILLEGALLY worn wristband
(must be below elbow)

ROLLED WAISTBAND



- Players are permitted to fold or roll their shorts at the natural waistband seam.
- Rolled waistbands must comply with Rule 3-4-5 restricting uniform pants to only one visible manufacturer's logo.

ARE THESE ROLLED WAISTBANDS **LEGAL**?



YES

Rolled waistband is **LEGAL**



NO

Rolled waistband is **ILLEGAL**
(too many logos)

SHOES AND SOCKS



- These are not “apparel” items and therefore have no color or logo restrictions



LOGOS



- One visible manufacturer's logo is permitted on any apparel item, limited to 2¼ square inches.



BRACES



- Manufactured knee and ankle braces do not need to meet any color restrictions.
- A brace is defined as anything worn for a medical purpose to increase stability.



LEGAL



LEGAL



LEGAL



LEGAL

JEWELRY RELIGIOUS / MEDICAL ALERT MEDALS



- Jewelry is not permitted.
- Religious medals must be taped and worn under the uniform.
- A medical alert medal must be taped and may be visible.



LEGAL OR ILLEGAL?



NO

**Silicon bands are
ILLEGAL**



NO

**ILLEGAL leg/arm sleeve
(must be a single, solid color)**



NO

**ILLEGAL leg sleeve
(logo too large)**

LEGAL OR ILLEGAL?



ILLEGAL

Headband and leg sleeves are legal colors but do not match.

LEGAL

Headband and leg sleeves are a legal color and match.

